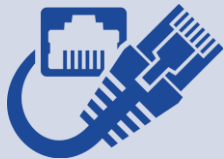


Order 14 days prior to the 1<sup>st</sup> day of the event move-in for incentive rate.

Smart City is the exclusive telecommunications service provider for the Tampa Convention Center.



**Hardwired Internet Service**

- Shared or Dedicated Bandwidth Services



**Wireless Internet Service**

- Custom Hot Spot
- On-Site / On-Demand Services



To review and order our services visit <https://orders.smartcitynetworks.com>



**Telephone Service**

- Single-Line
- Multi-Line
- Conference Telephone Services

Questions? Contact us at (888) 446•6911 or [csr@smartcity.com](mailto:csr@smartcity.com).



Exhibitor Company Name:	Show Name:
Billing Company Name:	Show Dates: / / To / /
Billing Company Address:	Incentive Order Deadline: <b>14 Days Prior to 1st Day of Show Move-in</b>
City, State / Country, Zip:	Booth / Room #:
Contact Name:	Phone Number: ( ) -
Contact Email:	Cell Number: ( ) -
On-Site Contact:	On-Site Number: ( ) -

**When your order is processed, you will receive an email with a link to Smart City Networks payment portal. Payment in full is required prior to the event.**

With execution of this document the Customer hereby authorizes Smart City to provide services as requested herein, is authorized to request such services and acknowledges full and complete understanding of the Terms and Conditions and Attachments.

**View complete Terms & Conditions at: [orders.smartcitynetworks.com/tc.aspx?center=099](http://orders.smartcitynetworks.com/tc.aspx?center=099)**

<b>Print Authorized Name Accepting Terms and Conditions:</b>	<b>Authorized Signature Accepting Terms and Conditions:</b>
--	---

<b>Dedicated Wired Internet Routers Allowed</b> Connection speeds of 3Mbps and up <b>Required for:</b> <ul style="list-style-type: none"> <li>• Web Casting</li> <li>• HD Streaming</li> <li>• Routers(wired or wireless)</li> </ul> <b>Includes 5 Static Public IP Addresses</b>	<b>Broadband Wired Internet No Wired or Wireless Routers</b> Connection speeds 1.5mbps Burstable to 3mbps, DHCP <b>Recommended for:</b> <ul style="list-style-type: none"> <li>• Internet Applications</li> <li>• Social Media</li> <li>• Multi Media Downloads</li> </ul> <b>Includes 1 Private IP Address</b>
---	---

**Wireless services are NOT included on this form – please contact us for specific rates**

**ORDER ONLINE: [orders.smartcitynetworks.com/ordering.aspx](http://orders.smartcitynetworks.com/ordering.aspx)**

**\*\*\*Incentive rate applies to orders received with payment 14 days prior to 1<sup>st</sup> day of show move-in\*\*\***

1. Internet Services – Routers Prohibited	QTY	Incentive	Base	On-Site	Total
a. Broadband Internet Service		\$895	\$1,140	\$1,368	
b. Additional Device for Broadband Service, Per Device Up to 4		\$185	\$220	\$255	
<b>If you require 6 or more devices – Please call (888) 446-6911.</b>					
2. Dedicated Internet Services – Routers Supported					
a. Dedicated 3Mbps		\$3,495	\$4,370	\$5,244	
b. Dedicated 6Mbps		\$5,900	\$7,375	\$8,850	
c. Dedicated 10Mbps		\$7,850	\$9,810	\$11,772	
d. Upgrade to 29 Public Static IP Addresses		\$995	\$1,194	\$1,433	
<b>Higher Bandwidth Services Available – Please call (888) 446-6911 for quote.</b>					
3. Internet Equipment & Labor					
a. Switch Rental – up to 24 ports		\$185	\$225	\$270	
b. Patch Cable (up to 50') – Cat5e		\$50	\$62	\$74	
c. Labor / Floor Work – Fee Per Hour		\$125	\$125	\$125	
4. Voice Services: PBX Service – Domestic LD Included					
a. Single Line – <input type="checkbox"/> Instrument, <input type="checkbox"/> Non Dial 9, <input type="checkbox"/> Int'l LD		\$275	\$345	\$414	
b. Multi-line Phone w/ 1 main number & 1 rollover line		\$415	\$520	\$624	
c. Speaker Phone Line w/ Polycom Instrument		\$465	\$575	\$690	
5. Special Quote – Attachment A or Statement of Work (if applicable)					
6. Distance Fee of \$500 Internet / \$100 Telephone for each line outside the convention venue x (number of lines)					
<b>For extension of 3<sup>rd</sup> party data circuits (ISDN, DSL, T-1, DS3, Ethernet) please call for quote.</b>					
			<b>SUBTOTAL</b>		
<b>Make Checks Payable to SMART CITY NETWORKS</b> Send Completed Orders with Payment To: 5795 W. Badura Avenue, Suite 110 Las Vegas, NV 89118 (888) 446-6911 FAX (702) 943-6001 <a href="mailto:csr@smartcity.com">csr@smartcity.com</a>			<b>ESTIMATED 10% TAX / FEES</b>		
			<b>GRAND TOTAL</b>		

Effective January 1, 2018 – December 31, 2018

Customer No: **2018 - 046 -**

INTERNET - NETWORK / TELEPHONE SERVICE CONTRACT

# Network Security Declaration

Center: T a m p a C C - ( 0 4 6 ) - F L Company Name: \_\_\_\_\_  
Show: \_\_\_\_\_ Booth / Room #: \_\_\_\_\_  
Customer / Ref #: 2018 - 046 -

The Network Security Policy implemented for this Facility requires Customer(s) adherence to several necessary precautions in order for Smart City to maintain a healthy, viable network for all Customers. This declaration of compliance with the security requirements as noted herein is an acknowledgement of Smart City's filtering policies and must be completed, signed by an authorized Customer representative and mailed or faxed to Smart City prior to the requested network service(s) being activated for Customer's usage.

## Network Security Policy:

Smart City requires that all devices directly or indirectly accessing Smart City's network(s) have the latest virus scan software, Windows® security updates, system patches, and any other technological precautions necessary to protect the Customer(s) and others from viruses, malicious programs, and other disruptive applications. Any device(s) which adversely impacts Smart City's network(s) may cause service interruptions to Customer(s) which can lead to disconnection of the Customer's equipment from the network(s), with or without prior notice at Smart City's sole discretion. The device(s) in question will remain disconnected until all issues are adequately resolved. All charges will apply and no refunds will be given. Additional charges may apply for trouble diagnosis and / or problem resolution.

Smart City has implemented filtering policies on all Internet routers. These filters block all inbound Internet Control Message Protocol (ICMP) -- Ping, Traceroute, etc. -- destined to any Smart City Network(s). Smart City understands that Ping and Traceroute are valuable troubleshooting tools; therefore Smart City's Policy does allow ICMP (Ping & Traceroute) packets sourced from any Smart City network(s).

Further, to avoid infection by common Internet worms (Nachi, MSBlaster, LoveSAN, etc.), Smart City has implemented similar filters on the following TCP and UDP port numbers: UDP – 137, 138, 402, 1434 and TCP – 135, 139, 402, 445, 4444.

Customers requiring inbound or outbound access to any of the filtered ports, should contact a Smart City customer service representative in advance of the event with details of the specific requirements so that Smart City may consider the potential of a customized alternative.

Each Customer's business is important to Smart City and with advanced and timely notification of a Customer's needs we are confident that we can provide network services that perform as expected for all clients.

**\*\*\* Please inform all show site personnel about the importance of Smart City's Network Security compliance issues \*\*\***

**\*\*\* Services are activated after Smart City is in receipt of this signed declaration of compliance with our network security requirements \*\*\***

Device(s) Operating System: \_\_\_\_\_ Total # of Devices Connecting to Smart City's Network: \_\_\_\_\_  
Type of Anti-Virus Software Installed: Norton McAfee Other: \_\_\_\_\_  
Virus Scan Last Updated - Date: \_\_\_\_ / \_\_\_\_ / \_\_\_\_ Security Updates Last Performed - Date: \_\_\_\_ / \_\_\_\_ / \_\_\_\_  
Are You Renting Computers? Yes No Rental Company Name: \_\_\_\_\_  
Rental Company Contact: \_\_\_\_\_ Contact Number: \_\_\_\_\_

With execution of this document the Customer hereby attests that Customer provided equipment, which will be connected to Smart City's network(s) at the above noted Facility and Show / Event has been properly protected, contains anti-virus software, and the latest patches and security updates have been installed. Customer(s) also accepts the responsibility for the performance of Customer's equipment and understands the conditions placed on service delivery by this document as well as the potential that additional charges may be incurred should Customer's equipment be found to adversely impact Smart City's network(s) performance. The Customer acknowledges that this Network Security Declaration is part of the Customer Contract allowing Smart City to provide requested service(s) and is subject to change without notice.

Signature \_\_\_\_\_ Date \_\_\_\_\_  
Printed Name \_\_\_\_\_ Title \_\_\_\_\_



# Floor Plan – Communications Cable

Center: T a m p a C C - ( 0 4 6 ) - F L Company Name: \_\_\_\_\_  
 Show: \_\_\_\_\_ Booth / Room #: \_\_\_\_\_  
 Customer / Ref #: 2018 - 046 -

**Voice and Data communications cabling.** Smart City is the **official installer** of Voice and Data communications cabling. Smart City provides cabling to booths, within booths (under carpet and flooring) and from booth-to-booth. Fiber Optic, twisted pair (Category 3, 5 and 6), coaxial and all other data and telecommunication cable fall under Smart City's area of expertise.

**IMPORTANT!!** Prior to installation of service, a complete floor plan is required. Please utilize this grid should you not have your own floor plan to send us. You may use a different floor plan for each service group (Telephone, Internet, etc.) or combine all services on one floor plan. For a floor plan to be considered complete it **must** include all the information listed below (Main Distribution Location "MDL", designated location of items within the booth, surrounding booths, scale-length and width).

Adjacent Booth or Aisle# \_\_\_\_\_


Adjacent Booth or Aisle# \_\_\_\_\_

**X** = Main Distribution Location (**MDL**) – The originating line(s) for service, whether from overhead, a floor pocket or a column, will be delivered to a "MDL" before being distributed within your booth. Example: Storage area, back of booth, etc. (unless specified, the default for the "MDL" will be the back of the booth or at Smart City's discretion, the most convenient location). All distribution of services to their final destination within the booth will originate from the "MDL". A per line move fee will apply to relocate services within your booth after they have been engineered and / or installed.

**T** = Location of Telephones, Fax lines or other telecommunications equipment "T".

**I / H / PC / C** = Location of primary Internet Service "I", Hubs "H", Patch Cables "PC" and / or Computers "C". For Smart City to perform your floor work, you will need to indicate the location of each item you want cabled. Make sure to order your floor work, hubs, and patch cables early and in advance of the show moving in.

**Orientation** = The Booth or Aisle #'s surrounding your booth. A minimum of one surrounding Booth or Aisle # is required (two or more would be more helpful) for Smart City to accurately install your services.

**Size** = Booth dimensions (example 10x10) \_\_\_\_\_. **Scale** = 1 Box is equal to \_\_\_\_\_ ft.



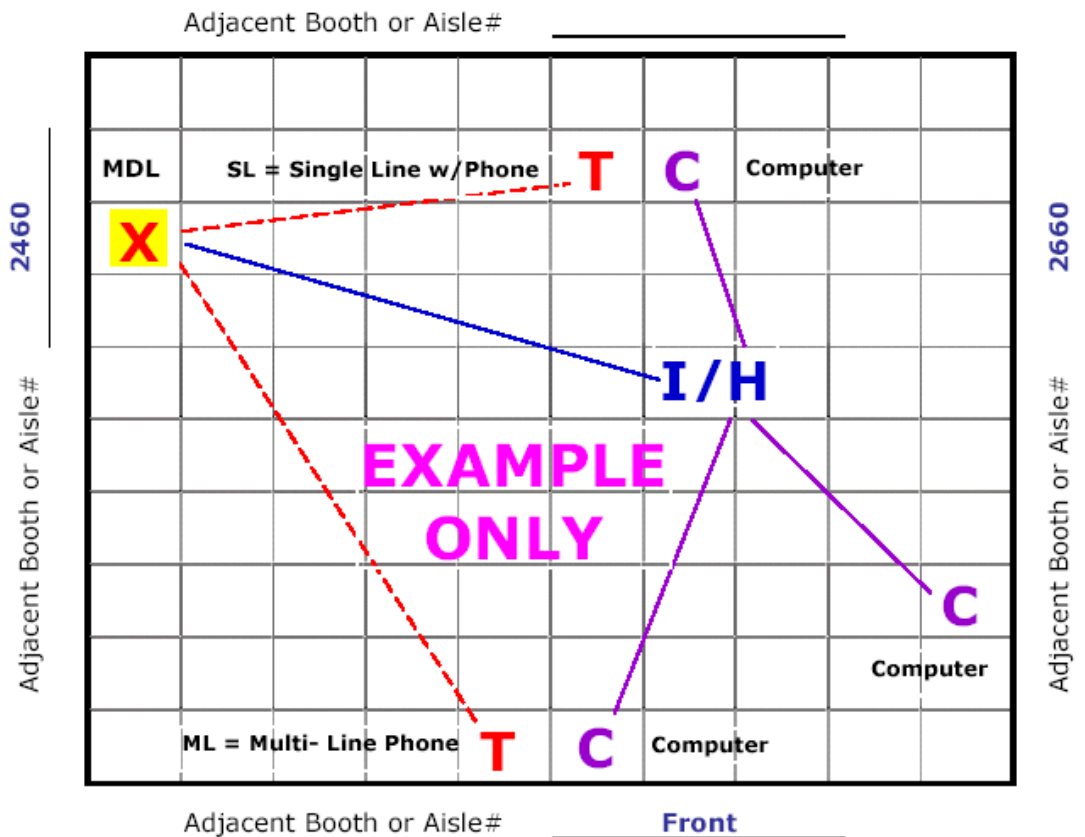
# Floor Plan – Communications Cable

Center: T a m p a C C - ( 0 4 6 ) - F L  
 Show: ABC EXAMPLE SHOW

Company Name: ABC EXAMPLE COMPANY  
 Booth / Room #: 1234  
 Customer / Ref #: 2018 - 046 - XXX - XXXX

**Voice and Data communications cabling.** Smart City is the **exclusive installer** of Voice and Data communications cabling. Smart City provides cabling to booths, within booths (under carpet and flooring) and from booth-to-booth. Fiber Optic, twisted pair (Category 3, 5 and 6) and all other data and telecommunication cable fall under Smart City's area of expertise.

**IMPORTANT!!** Prior to installation of service, a complete floor plan is required. Please utilize this grid should you not have your own floor plan to send us. You may use a different floor plan for each service group (Telephone, Internet, etc.) or combine all services on one floor plan. For a floor plan to be considered complete it **must** include all the information listed below (Main Distribution Location "MDL", designated location of items within the booth, surrounding booths, scale-length and width).



**X** = Main Distribution Location (**MDL**) – The originating line(s) for service, whether from overhead, a floor pocket or a column, will be delivered to a “**MDL**” before being distributed within your booth. Example: Storage area, back of booth, etc. (unless specified, the default for the “**MDL**” will be the back of the booth or at Smart City’s discretion, the most convenient location). All distribution of services to their final destination within the booth will originate from the “**MDL**”. A per line move fee will apply to relocate services within your booth after they have been engineered and / or installed.

**T** = Location of Telephones, Fax lines or other telecommunications equipment “**T**”.

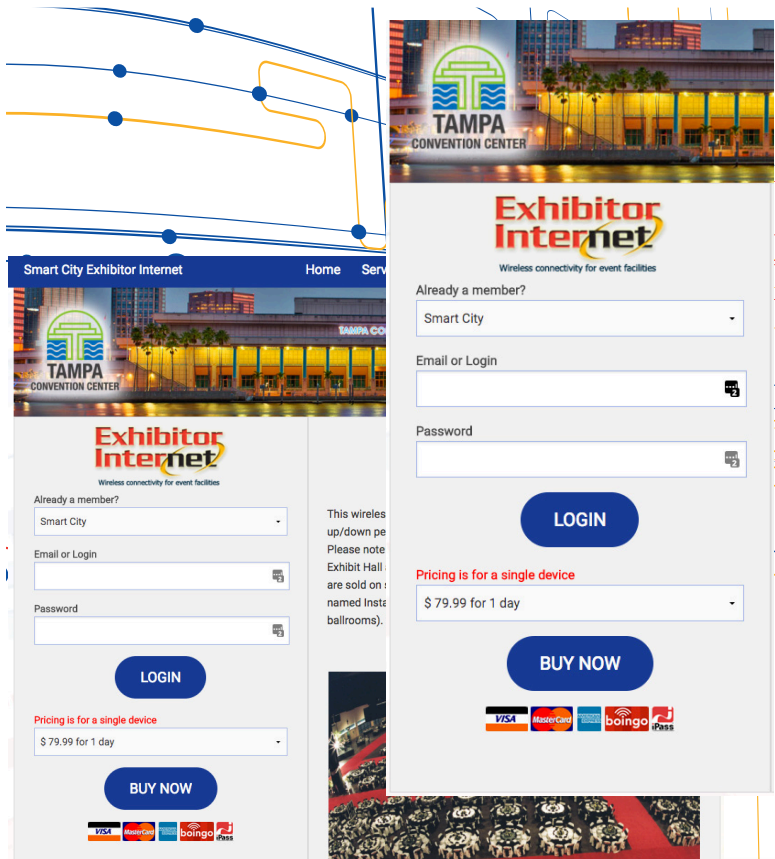
**I / H / PC / C** = Location of primary Internet Service “**I**”, Hubs “**H**”, Patch Cables “**PC**” and / or Computers “**C**”. For Smart City to perform your floor work, you will need to indicate the location of each item you want cabled. Make sure to order your floor work, hubs, and patch cables early and in advance of the show moving in.

**Orientation** = The Booth or Aisle #'s surrounding your booth. A minimum of one surrounding Booth or Aisle # is required (two or more would be more helpful) for Smart City to accurately install your services.

**Size** = Booth dimensions (example 10x10) 20 x 20 . **Scale** = 1 Box is equal to 2 ft.



# Smart City Wireless Services Tampa Convention Center



## Wireless Options

Depending on where you are in the facility, you will see one or both of the following SSIDs (network names). Although you may see both Exhibitor and Instant Internet, they are not actually supported in all areas. These networks are supported only in the areas designated below. Choose the option which best suits your location and requirements.

### • Exhibitor Internet

Available facility wide.

\*Connectivity speeds up to 1.54Mbps up/1.54Mbps down.

5 GHz wireless frequency only

- 1 day for \$79.99
- 3 day for \$227.97 **5% discount**
- 5 day for \$359.95 **10% discount**

### • Instant Internet

Available throughout the lobby and meeting room spaces.

\*Connectivity speeds up to 768k up/768k down.

- 1 day for \$12.95

### • Complimentary WiFi

Available at the Sail Pavilion and the Bay Bistro area.

\*Connectivity speeds up to 256k up/256k down.

\* Each purchase is limited to one device. One account cannot be shared among multiple devices simultaneously.

## WiFi Connection Guide

- Open your browser (Internet Explorer, Firefox, Safari, or other standard browser). You should see a page resembling the graphic shown.\*
- If this is your initial purchase, enter your username (email address) and password in the area shown on the left and click BUY NOW. Follow additional prompts to complete your purchase or log-in. Refer to service options and limitations shown to the right.
- If you have already created an account and are returning for an additional session, click LOGIN.

\*If you do not see the above screenshot when you open your browser, please refresh your browser. If you still do not see this page you may need to manually select the SSID (network name) by following your computer's procedure for viewing and selecting a wireless network. The Smart City SSIDs to look for are "Exhibitor Internet" or "Instant Internet."

## Questions?

For questions regarding wireless services or any of the other wired Internet and telephone services we provide, please call Smart City at 888-446-6911 or visit us online at [www.smartcitynetworks.com](http://www.smartcitynetworks.com)